

# D-88 Concealed Spring-Assisted Cam-Lift Hinge



HINGES

## FEATURES

- Unique spring design concealed in a strap
- Less chance of damage to spring
- Ultimate tamperproof design eliminates unqualified field adjustments
- Cleaner lines, less cumbersome appearance
- Life cycle tested, 100,000 repetitions
- Freezeproof, no matter how it's cleaned
- Corrosion-resistant, light weight alloy
- Wear resistant Delrin base cam
- 1/2" lift
- Non-reversible design, dependable closing
- Designed especially for foam construction

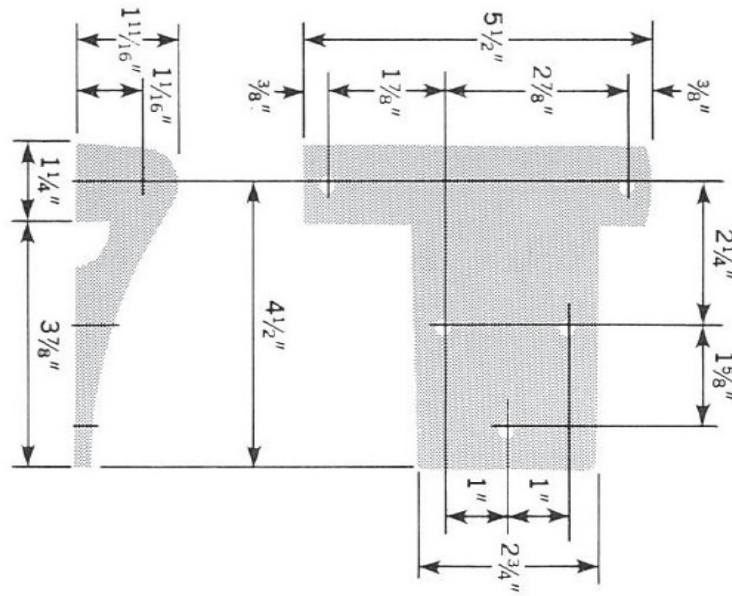
**DENT**  
DESIGN HARDWARE

1-800-598-DENT  
[www.dent-mfg.com](http://www.dent-mfg.com)

Fax: 610-262-1870  
[sales@dent-mfg.com](mailto:sales@dent-mfg.com)

# D-88 Concealed Spring-Assisted Cam-Lift Hinge

HINGES



## SPECIFICATIONS

**Overall Length:** 5-1/8"

**Material:** Aluminum

**Finishes:** Polished Aluminum  
Brushed Aluminum  
\*Other finishes available

**Offsets:** Flush

**Screw Holes:** 1/4" Hole, 82° Countersunk

**Shipping Weight:** Aluminum 1.7 lbs / pair

**Hinge Load Capacity:** Aluminum 150 lbs / 1 pair

**DENT**  
DESIGN HARDWARE

1-800-598-DENT  
www.dent-mfg.com

Fax: 610-262-1870  
sales@dent-mfg.com