

D-61 Self Closing Cam-Lift Hinge



HINGES

FEATURES

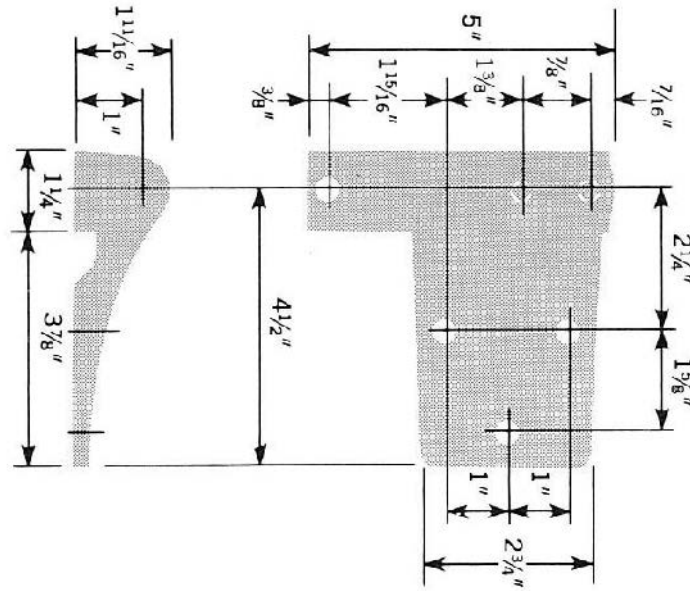
- Corrosion-resistant alloy
- Lift-off capability
- Wear resistant Delrin cams
- 1/2" lift
- Easy opening, self-closing action
- Lightweight design saves freight and handling costs
- Durable construction, long life
- Designed especially for foam construction

DENT
DESIGN HARDWARE

1-800-598-DENT
www.dent-mfg.com

Fax: 610-262-1870
sales@dent-mfg.com

D-61 Self Closing Cam-Lift Hinge



SPECIFICATIONS

Overall Length: 5-1/8"

Material: Aluminum

Finishes: Polished Aluminum
 Brushed Aluminum
 *Other finishes available

Offsets: Flush

Screw Holes: 1/4" Hole, 82° Countersunk

Shipping Weight: Aluminum 1.6 lbs / pair

Hinge Load Capacity: Aluminum 150 lbs / 1 pair